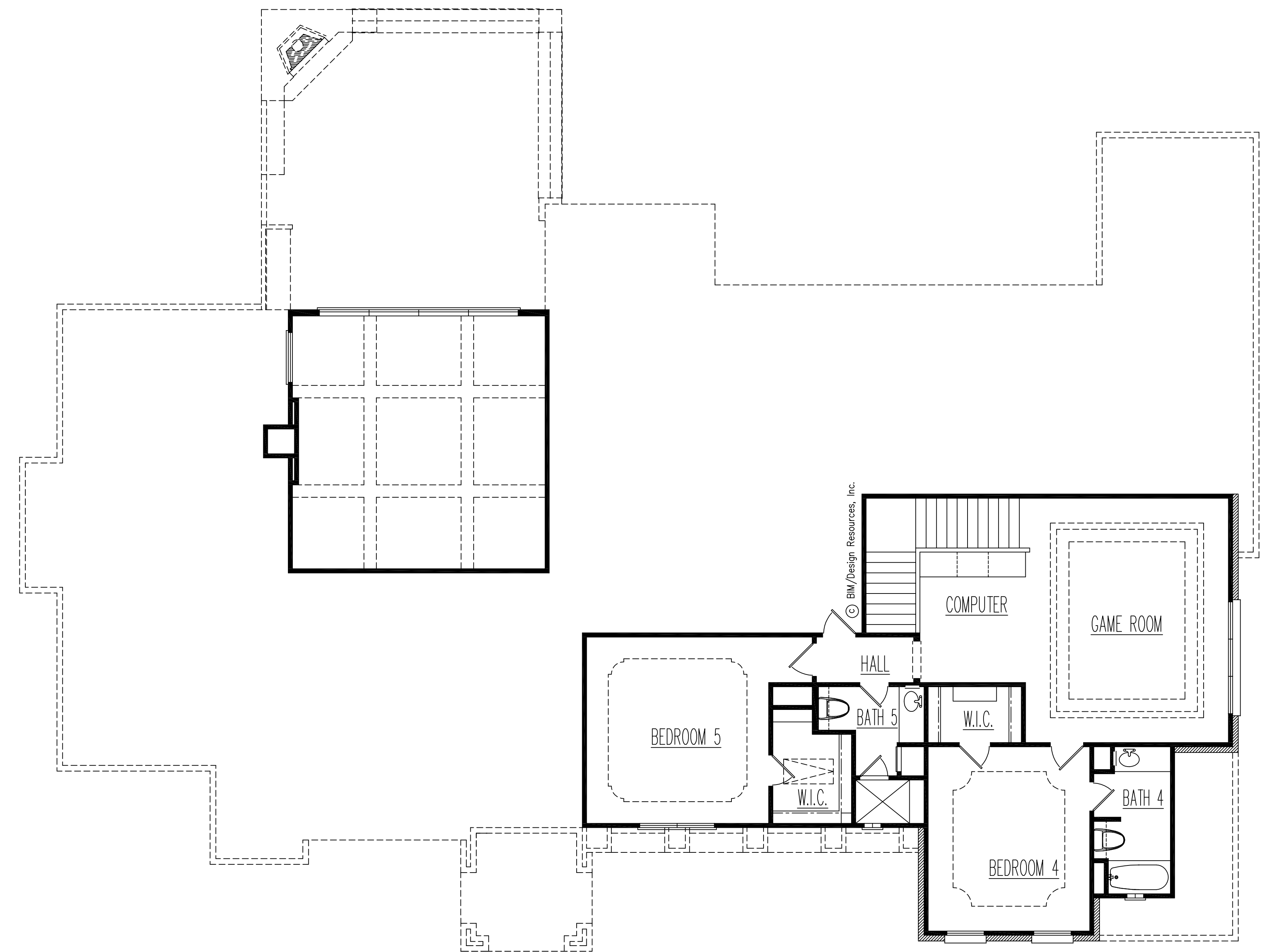


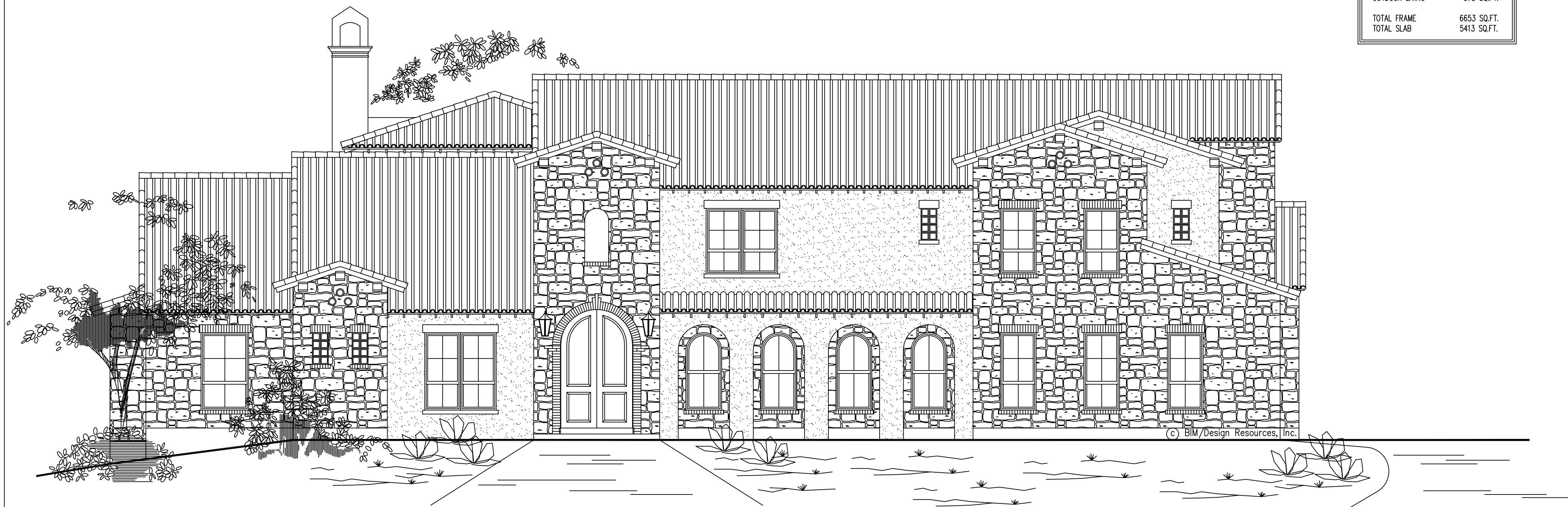
FIRST FLOOR



SECOND FLOOR

SQ. FT. CALCULATIONS:  
 FIGURES ARE APPROX. AND SHOULD  
 BE VERIFIED

FIRST FLOOR FRAME	3759 SQ.FT.
SECOND FLR FRAME	1240 SQ.FT.
LIVING MASONRY LUG	89 SQ.FT.
TOTAL LIVING	5088 SQ.FT.
GARAGE	820 SQ.FT.
GARAGE MASONRY LUG	32 SQ.FT.
FRONT PORCH	140 SQ.FT.
OUTDOOR LIVING	573 SQ.FT.
TOTAL FRAME	6653 SQ.FT.
TOTAL SLAB	5413 SQ.FT.



FRONT ELEVATION