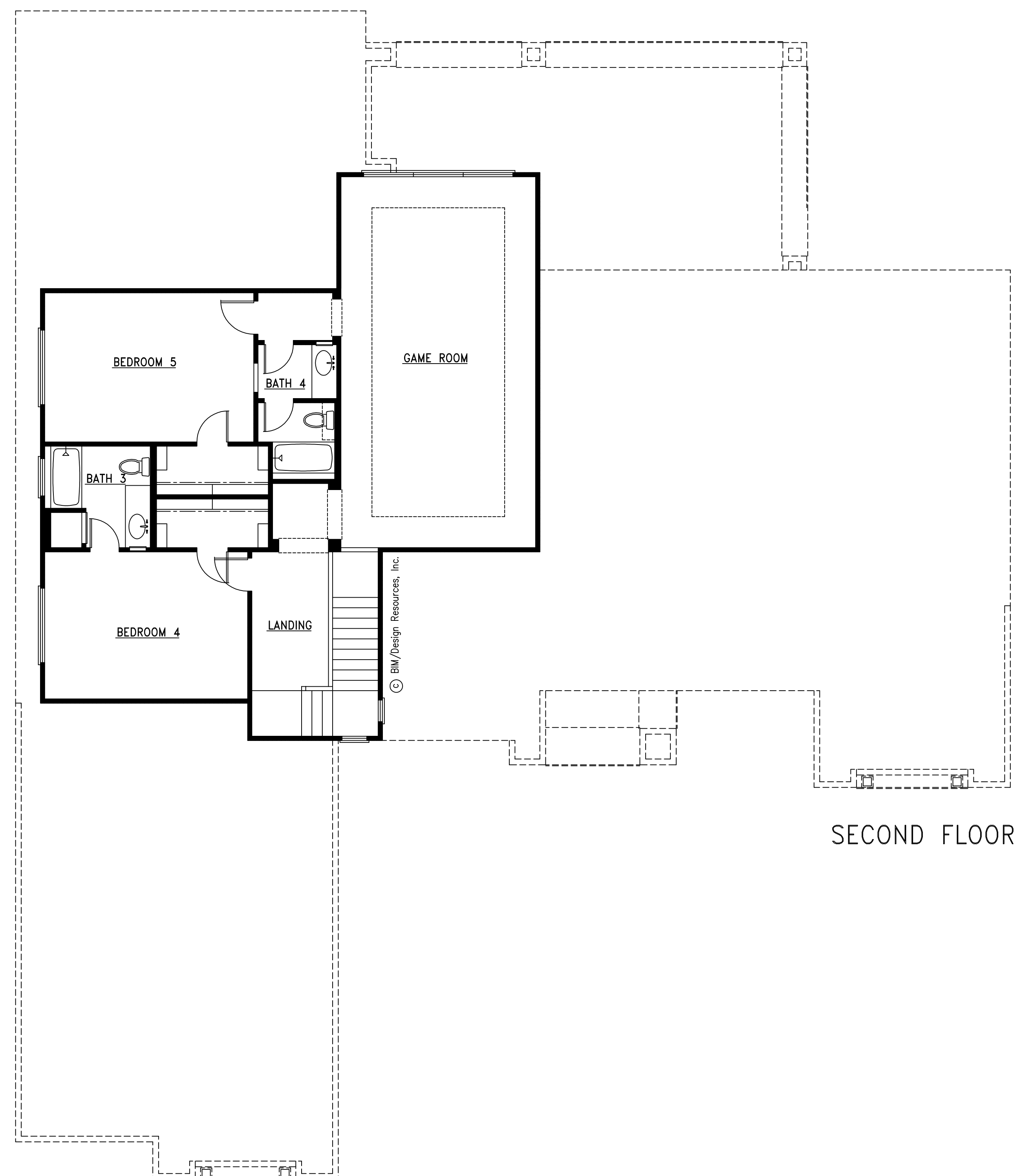


FIRST FLOOR



SECOND FLOOR

SQ. FT. CALCULATIONS:
 FIGURES ARE APPROX. AND SHOULD BE VERIFIED

FIRST FLOOR FRAME	3553 SQ.FT.
SECOND FLOOR FRAME	1282 SQ.FT.
LIVING LUG	17 SQ.FT.
TOTAL LIVING	4852 SQ.FT.
GARAGE FRAME	963 SQ.FT.
GARAGE LUG	45 SQ.FT.
ENTRY	70 SQ.FT.
OUTDOOR LIVING	539 SQ.FT.
TOTAL SLAB	6469 SQ.FT.
TOTAL FRAME	5187 SQ.FT.



FRONT ELEVATION