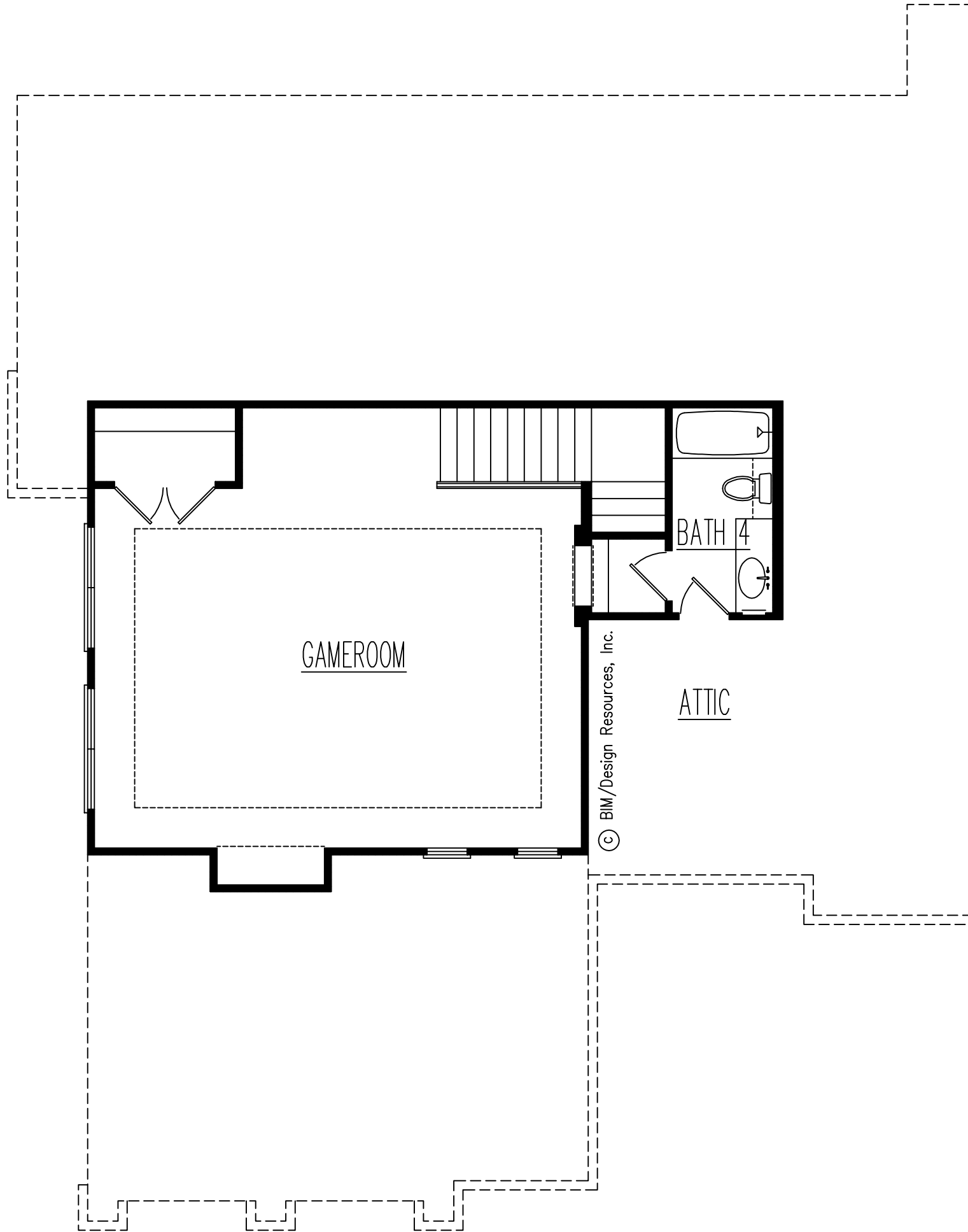


FIRST FLOOR

SQ. FT. CALCULATIONS:
 FIGURES ARE APPROX. AND SHOULD
 BE VERIFIED.

FIRST FLOOR FRAME	3436 SQ.FT.
SECOND FLOOR FRAME	544 SQ.FT.
TOTAL LIVING	3980 SQ.FT.
GARAGE FRAME	798 SQ.FT.
GARAGE L.L.O.	15 SQ.FT.
FRONT PORCH	151 SQ.FT.
OUTDOOR LIVING	476 SQ.FT.
TOTAL FRAME	5420 SQ.FT.
TOTAL SLAB	4876 SQ.FT.



SECOND FLOOR



FRONT ELEVATION